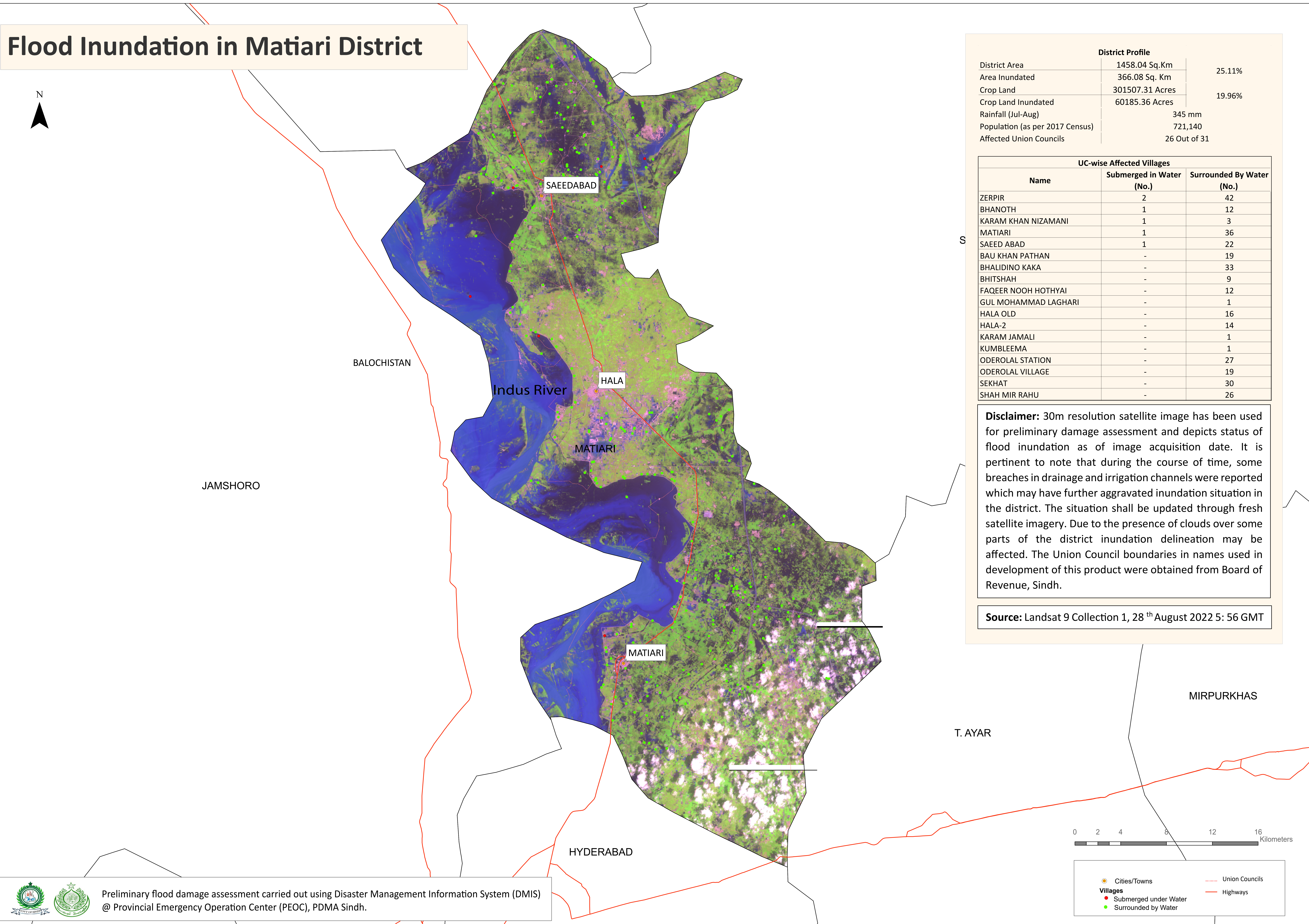
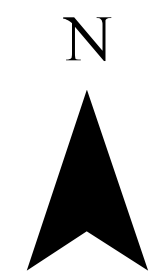


Flood Inundation in Matiari District



District Profile		
District Area	1458.04 Sq.Km	
Area Inundated	366.08 Sq. Km	25.11%
Crop Land	301507.31 Acres	
Crop Land Inundated	60185.36 Acres	19.96%
Rainfall (Jul-Aug)	345 mm	
Population (as per 2017 Census)	721,140	
Affected Union Councils	26 Out of 31	

UC-wise Affected Villages		
Name	Submerged in Water (No.)	Surrounded By Water (No.)
ZERPIR	2	42
BHANOOTH	1	12
KARAM KHAN NIZAMANI	1	3
MATIARI	1	36
SAEED ABAD	1	22
BAU KHAN PATHAN	-	19
BHALIDINO KAKA	-	33
BHITSHAH	-	9
FAQEER NOOH HOTHYAI	-	12
GUL MOHAMMAD LAGHARI	-	1
HALA OLD	-	16
HALA-2	-	14
KARAM JAMALI	-	1
KUMBLEEMA	-	1
ODEROLAL STATION	-	27
ODEROLAL VILLAGE	-	19
SEKHAT	-	30
SHAH MIR RAHU	-	26

Disclaimer: 30m resolution satellite image has been used for preliminary damage assessment and depicts status of flood inundation as of image acquisition date. It is pertinent to note that during the course of time, some breaches in drainage and irrigation channels were reported which may have further aggravated inundation situation in the district. The situation shall be updated through fresh satellite imagery. Due to the presence of clouds over some parts of the district inundation delineation may be affected. The Union Council boundaries in names used in development of this product were obtained from Board of Revenue, Sindh.

Source: Landsat 9 Collection 1, 28th August 2022 5: 56 GMT

0 2 4 8 12 16 Kilometers

- Cities/Towns
- Submerged under Water
- Surrounded by Water
- Union Councils
- Highways